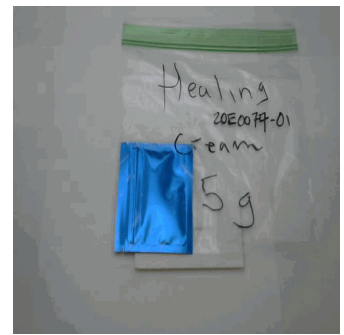




**Customer:** Glow Holistic  
**Customer Sample ID:** Healing Cream  
**Laboratory Number:** 20E0077-01



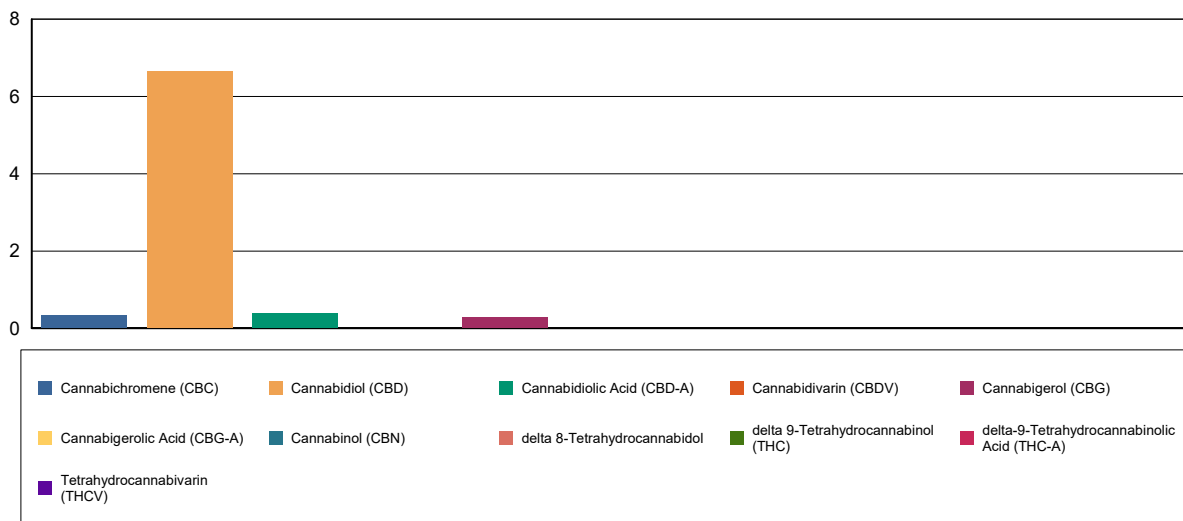
# Cannabinoid Profile

**Extraction Technician:** DF  
**Analytical Chemist:** MF

Extraction Date(s)	Analysis Date(s)
5/11/2020	5/11/2020

Cannabinoids (HPLC)		Results	
	LOD (mg/g)	%	mg/g
Cannabidivarin (CBDV)	<0.050		
Cannabidiolic Acid (CBD-A)		0.04	0.383
Cannabigerolic Acid (CBG-A)	<0.050		
Cannabigerol (CBG)		0.03	0.281
Cannabidiol (CBD)		0.66	6.64
Tetrahydrocannabivarin (THCV)	<0.050		
Cannabinol (CBN)	<0.050		
delta 9-Tetrahydrocannabinol (THC)	<0.050		
delta 8-Tetrahydrocannabidol	<0.050		
Cannabichromene (CBC)		0.03	0.333
delta-9-Tetrahydrocannabinolic Acid (THC-A)	<0.050		
Cannabinoids Total		%	mg/g
Max Active THC		0.00	0.00
Max Active CBD		0.69	6.98
T.Active Cannabinoids		0.73	7.25
Total Cannabinoids		0.76	7.64
Ratios			
NA:1 CBD to THC		0.00:1 THC to CBD	

## Cannabinoid (mg/g)



Reporting Limits will vary based on sample extraction weight used for the analysis.

Altitude Consulting, LLC utilizes NIST traceable Reference Standards and Certified Reference Material to calibrate analytical instruments along with proven analytical methods. The methods are applied in the most ethical manner following good laboratory practice guidelines. The results of this report are based solely on the sample submitted and cannot be reproduced.



**Customer:** Glow Holistic  
**Customer Sample ID:** Bath Bomb  
**Laboratory Number:** 20E0077-02  
**Servings per Container:** 135.2971



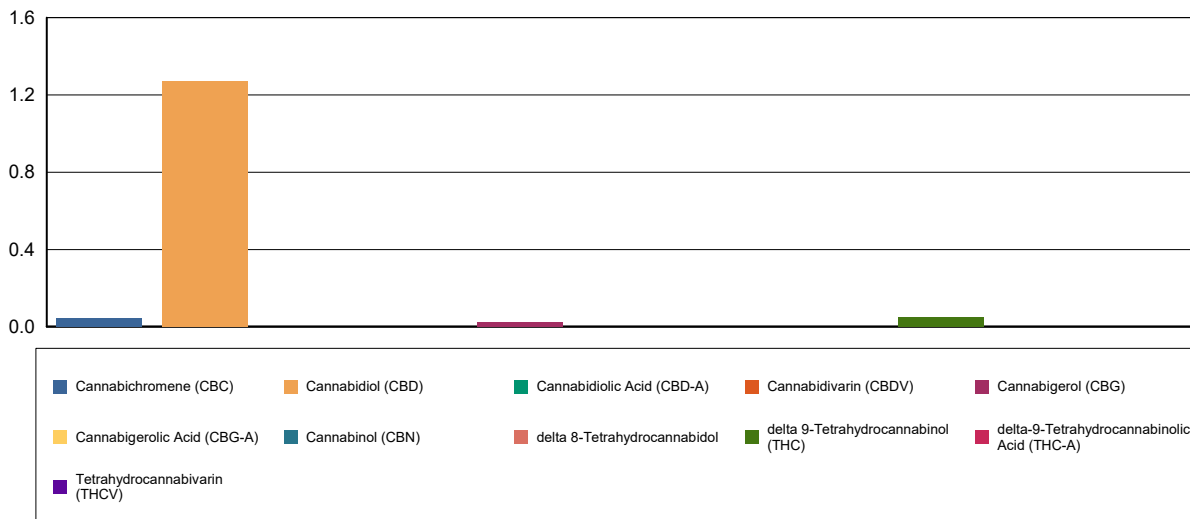
## Cannabinoid Profile

**Extraction Technician:** DF  
**Analytical Chemist:** MF

Extraction Date(s)	Analysis Date(s)
5/11/2020	5/11/2020

Cannabinoids (HPLC)		Results		
	LOD (mg/g)	%	mg/g	mg/bomb
Cannabidiarin (CBDV)	<0.010			
Cannabidiolic Acid (CBD-A)	<0.010			
Cannabigerolic Acid (CBG-A)	<0.010			
Cannabigerol (CBG)		0.003	0.027	3.58
Cannabidiol (CBD)		0.13	1.27	172
Tetrahydrocannabivarin (THCV)	<0.010			
Cannabinol (CBN)	<0.010			
delta 9-Tetrahydrocannabinol (THC)		0.005	0.050	6.71
delta 8-Tetrahydrocannabidol	<0.010			
Cannabichromene (CBC)		0.004	0.044	5.88
delta-9-Tetrahydrocannabinolic Acid (THC-A)	<0.010			
Cannabinoids Total		%	mg/g	
Max Active THC		0.00	0.05	
Max Active CBD		0.13	1.27	
T.Active Cannabinoids		0.14	1.39	
Total Cannabinoids		0.14	1.39	
Ratios				
25.66:1 CBD to THC		0.04:1 THC to CBD		

### Cannabinoid (mg/g)



Reporting Limits will vary based on sample extraction weight used for the analysis.  
 Altitude Consulting, LLC utilizes NIST traceable Reference Standards and Certified Reference Material to calibrate analytical instruments along with proven analytical methods.  
 The methods are applied in the most ethical manner following good laboratory practice guidelines. The results of this report are based solely on the sample submitted and cannot be reproduced.